



19 Cerbera Bend Cranbourne North VIC

4 2 2

Located in the ever-popular Eve Estate on the high side of the street, this beautiful east-facing family home spans a generous 510 SQM land area. Every aspect of this home is designed to blend comfort with convenience.

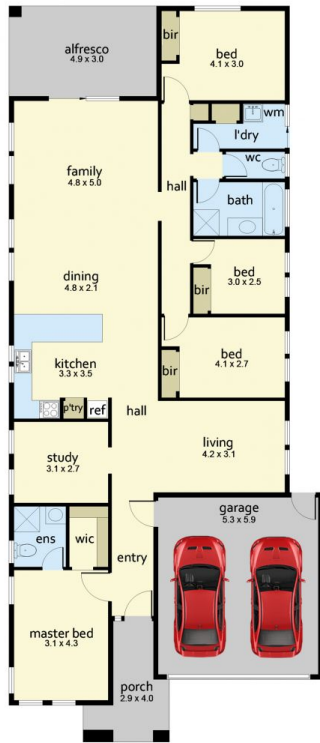
Features include:

- 4 Generously sized bedrooms, Master with walk-in robe and ensuite
- The remaining bedrooms have built-in robes,
- Plus study or 5th bedroom
- Two living zones, including formal and Family/Dining
- Open-plan kitchen, overlooking the family area
- Spacious kitchen with stainless steel appliances & cupboard space.
- Ducted heating and a split system cooling
- Double garage with internal access
- Alfresco and landscaped backyard for entertaining family

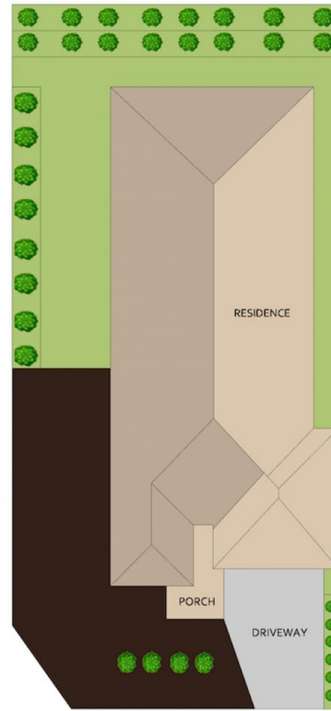
Price : \$750,000 - \$820,000
Land Size : 510 sqm
View : <https://www.yere.com.au/sale/vic/south-east/cranbourne-north/residential/house/8119394>



Vandana Dewan
03 8578 5700



Floor Plan



Site Plan

The floor plan is not to scale. Areas and dimensions are approximate and therefore plan should only be used for illustrative purposes