



4A Sylvanwood Crescent Narre Warren VIC

3 2 2

Welcome to 4A Sylvanwood Crescent, a beautifully designed home that blends modern comfort with timeless elegance. This exceptional property is situated in the highly sought-after suburb of Narre Warren, offering a perfect balance of convenience and tranquility.

You'll appreciate the year-round comfort with two air conditioners and efficient heating, ensuring a cozy environment no matter the season. Additionally, a well-maintained water tank adds to the home's eco-friendly features.

Step inside and be greeted by a spacious, light-filled living area that flows seamlessly into the open-plan kitchen and dining space. The gourmet kitchen is a chef's delight, featuring sleek countertops, stainless steel appliances, and ample storage. It's the ideal space for entertaining or

Price : \$640,000 - \$700,000
Land Size : 283 sqm
View : <https://www.yere.com.au/sale/vic/south-east/narre-warren/residential/unit/8105023>

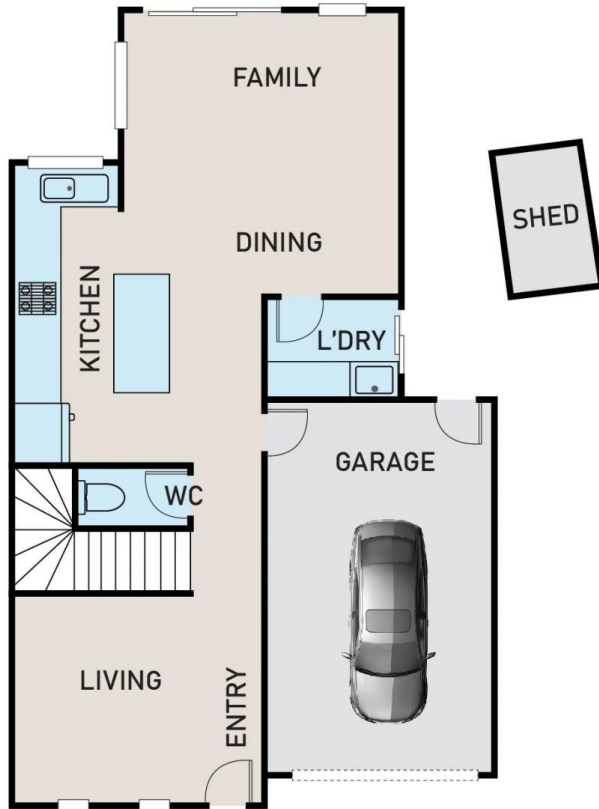


Lin Zhang
03 8578 5700

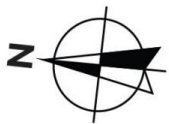
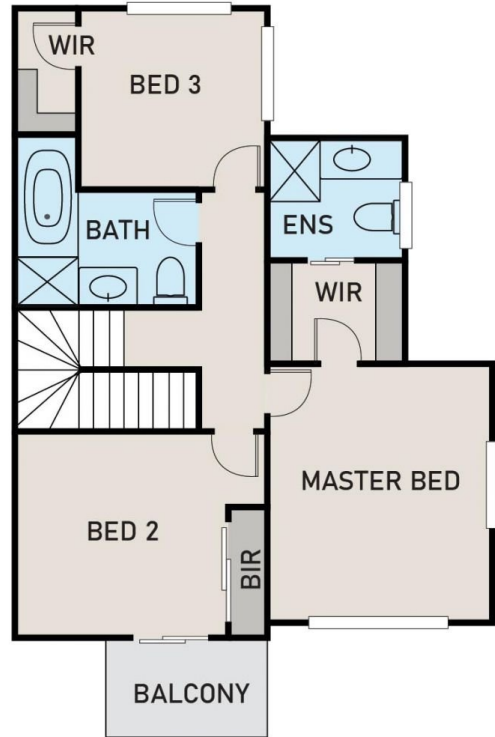


Steven Tao
03 8578 5700

GROUND FLOOR



FIRST FLOOR



4A SYLVANWOOD CRESCENT, NARRE WARREN

* DIMENSIONS ARE APPROXIMATE AND FOR ILLUSTRATIVE PURPOSES ONLY