



## 10 Officer Avenue Clyde VIC

4 2 2

This newly built home features four bedrooms, two bathrooms, a powder room, and a double car garage. Upon entering, you are welcomed by a wide entrance and a generously sized master bedroom, complete with a walk-in robe and luxurious ensuite, setting the stage for the impeccable design found throughout the home.

The layout of the remaining three bedrooms, along with the shared common bathroom and separate toilet, has been thoughtfully designed to emphasize both comfort and functionality.

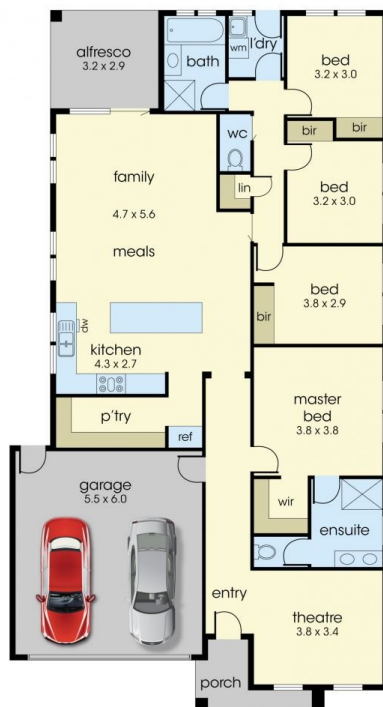
A spacious lounge area and open-plan kitchen seamlessly transition to low-maintenance garden, creating an idyllic setting for relaxation and entertainment.

[For full version visit the website](https://www.yere.com.au/sale/vic/south-east/clyde/residential/house/8093912)

**Type** : House  
**Price** : \$670,000 - \$730,000  
**Land Size** : 350 sqm  
**View** : <https://www.yere.com.au/sale/vic/south-east/clyde/residential/house/8093912>



**Asif Raees**  
03 8578 5700



**Floor Plan**



**Site Plan**

The floor plan is not to scale. Areas and dimensions are approximate and therefore plan should only be used for illustrative purposes