



10/21 Power Road Bayswater VIC

Nestled in the heart of Bayswater, 10/21 Power Road offers an exceptional opportunity for investors and owner-occupiers seeking a versatile and well-maintained office/warehouse.

This prime industrial unit is strategically located with a 285 sqm building area and plenty of parking, equipped with modern amenities, including kitchen and bathroom facilities, a Reception area, and a roller door - Suitable for owner occupiers, providing convenience and comfort for staff and visitors.

Situated close to major road networks such as the M3 Eastlink and Mountain Highway, the property is near essential services and amenities, including shopping centres, dining options, and public transport.

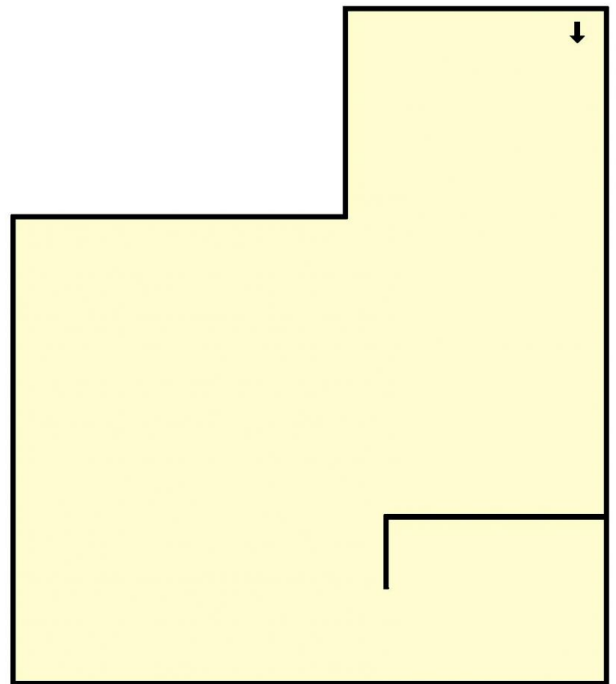
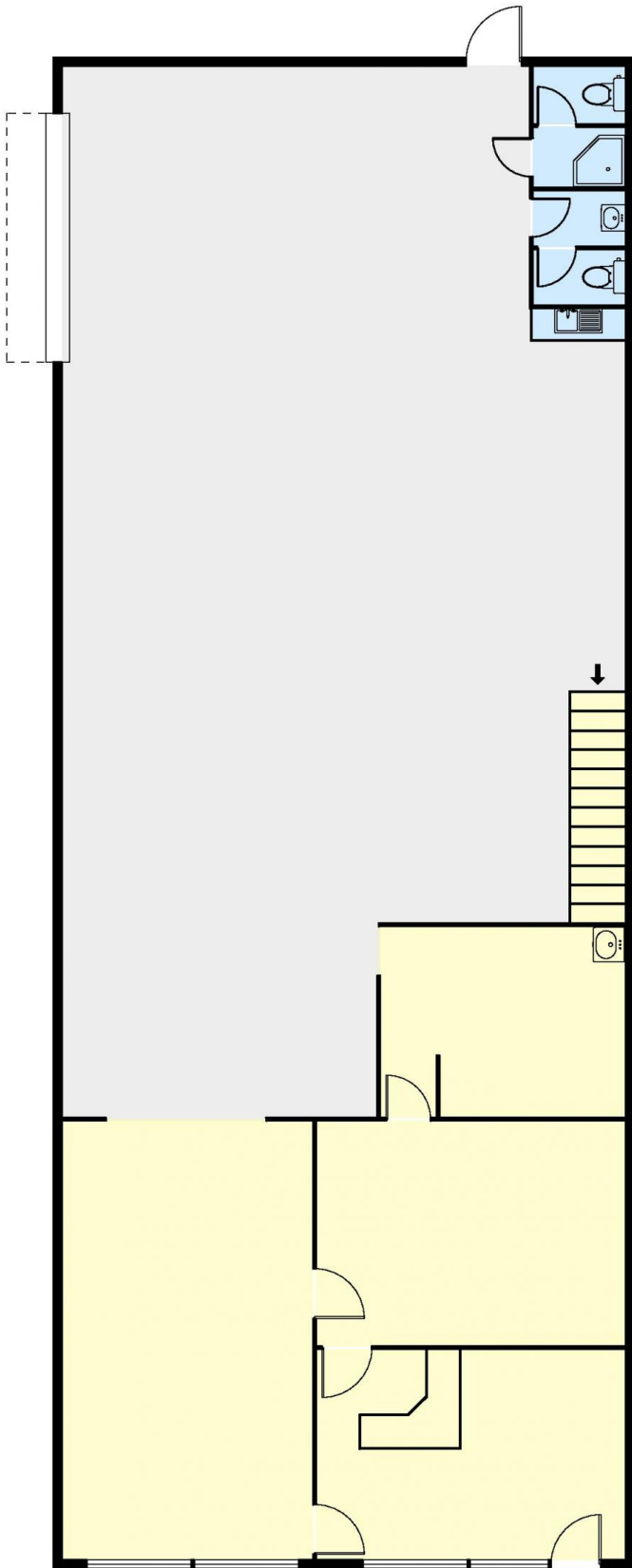
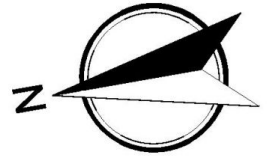
Price : Contact Agent
Building Size : 285 sqm
Land Size : 291 sqm
View : <https://www.yere.com.au/sale/vic/east/bayswater/commercial/industrial/8044469>



Lin Zhang
03 8578 5700



Arif Akhlaqi
03 8578 5700



10/21 Power Road, Bayswater

*Dimensions are approximate and for illustrative purposes only