



## 2 Kraft Court Pakenham VIC

5 2 3

This Cosy Family Home is nestled in the most sought-after pocket of Pakenham on approx 792m2 parcel of land. This property is the ideal stepping stone for first home buyers, upsizers, or astute investors or developers and it is ready for you to move straight into.

**Type** : House  
**Price** : \$ 730,000  
**Land Size** : 792 sqm  
**View** : <https://www.yere.com.au/sale/vic/south-east/pakenham/residential/house/8014092>

Property features include:

- ? Development opportunity and subdivision potential S.T.C.A, approx 792m2 land
- ? Five generously sized bedrooms, fitted with built-in robes
- ? Study nook
- ? Floating flooring downstairs and brand new carpet upstairs including stairs
- ? Spacious kitchen features quality appliances, including a Gas cooktop, Oven, rangehood, and ample pantry &

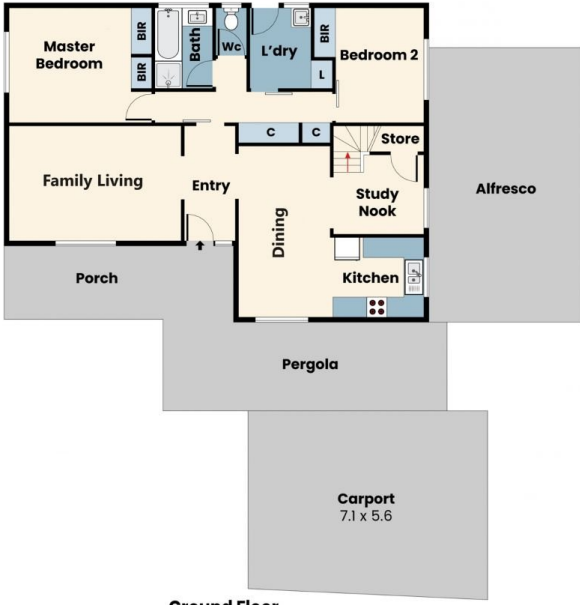
[For full version visit the website](https://www.yere.com.au)



**Rick Kothari**  
03 8578 5700



**Samir Pabari**  
03 8578 5700



Ground Floor



Top Floor



Site Plan

Floor Plan

The floor plan is not to scale. Areas and dimensions are approximate and therefore plan should only be used for illustrative purposes

Detailed description: This is a real estate agent profile for Rick Kothari. On the left, there is a circular portrait of Rick, a man with glasses and a beard, wearing a blue suit and tie. To the right of the portrait, his name 'RICK KOTHARI' is displayed in large blue letters, followed by his phone number '0412 767 574' and email 'rick@yere.com.au'. Below this is the 'YE YOUR EXPERT' logo. At the bottom, there is a 'Trusted Agent' badge with three stars and the text 'YOUR LOCAL AND TRUSTED REAL ESTATE EXPERT'. The background is a mix of dark blue and yellow.