






12 Wilkie Crescent Cranbourne North VIC

3  2  1 

Located within a few minutes' drive to all the amenities including the Eden rise shopping centre, Tullillan primary school, Alkira secondary college, other quality schools, Chisholm TAFE, Federation university, Monash freeway, public and private hospitals, child care centres, Berwick train station, local bus stops, parks, walkways, cycling tracks, lake and all other amenities is this beautiful home proudly boasting: -

3 bedrooms, master with full ensuite and WIR
Spacious kitchen with quality appliances, lots of storage space and walk in pantry
Open plan living and dining area to entertain families and friends throughout the year
Single lock up garage with internal and remote access

Extras include: - gas ducted heating, split system air

Price : \$620,000 - \$660,000

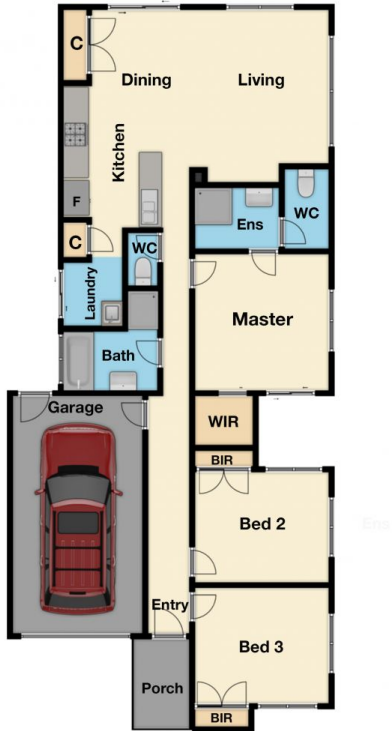
View : <https://www.yere.com.au/sale/vic/south-east/cranbourne-north/residential/house/7980254>



Rachhpal Singh
03 8578 5700



Megha Dhingra
03 8578 5700



Floor Plan



Site Plan

The floor plan is not to scale. Areas and dimensions are approximate and therefore plan should only be used for illustrative purposes