



2 Aspire Avenue Clyde North VIC

4  3  2 

Located within walking distance to the local parks, walkways and within 5-10 minutes' drive to the quality schools, Monash freeway, Casey hospital, Berwick train station, Federation university, Chisholm TAFE, Eden Rise shopping centre and all other amenities is this beautiful home proudly boasting: -

4 bedrooms, 3 bathrooms
2 masters with full ensuite and 2 bedrooms with BIR
Spacious kitchen with quality appliances and plenty of storage space
2 living areas and separate dining area
Double lock up garage with remote and internal access

Extras include: - gas ducted heating, evaporative cooling,

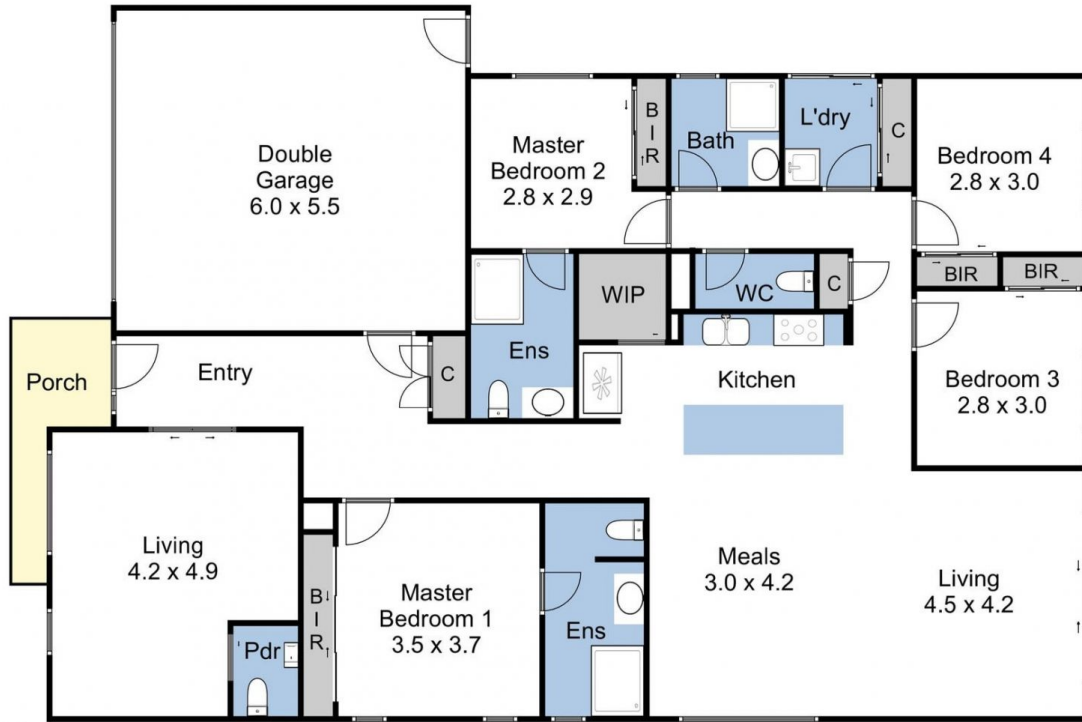
[For full version visit the website](https://www.yere.com.au/lease/vic/south-east/clyde-north/residential/house/7947585)

Type : House

View : <https://www.yere.com.au/lease/vic/south-east/clyde-north/residential/house/7947585>



Yogita Kapoor
03 8578 5700



S
↓