



8 Boree Court Berwick VIC

3 2 2

8 Boree Court Berwick VIC 3806

Proudly presenting this neat and cosy home, sitting in the great location of Berwick.

Only a few minutes walking distance to Timbarra P-9 College, bus stop; And Close to Berwick Town Centre, Fountain Gate Shopping Centre, Train station, Wilson Botanic Park Berwick, Federation University, Nossal High school, Chisholm Institute TAFE, Monash Health-Casey Hospital, Monash Freeway, princes Hwy and so on.

This brick veneer house with 3 bedrooms and 2 bathrooms set on a large block of 633 m2 (approx..)

Boasting:

- Master bedroom with walk in robe, fully ensuite and

[For full version visit the website](https://www.yere.com.au/sale/vic/south-east/berwick/residential/house/7872061)

Type : House
Price : \$ 745,000
Land Size : 633 sqm
View : <https://www.yere.com.au/sale/vic/south-east/berwick/residential/house/7872061>

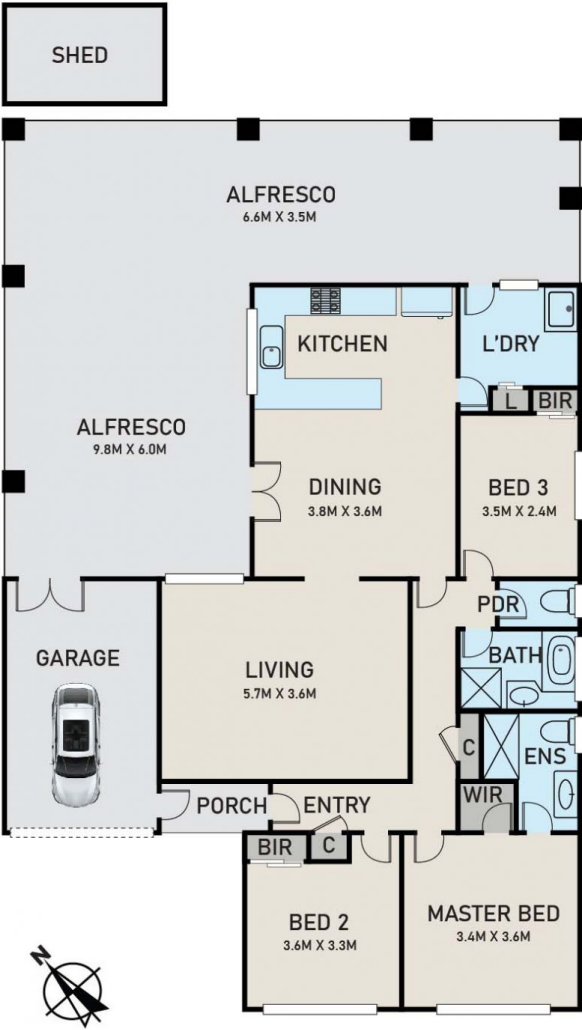


Crystal Lin
03 8578 5700

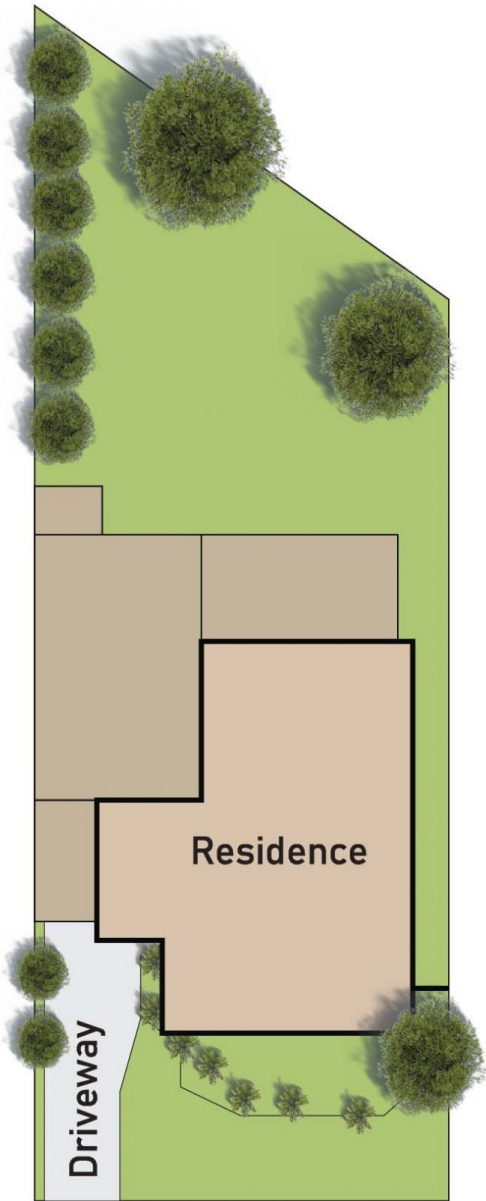


Lin Zhang
03 8578 5700

FLOOR PLAN



SITE PLAN



8 BOREE COURT, BERWICK

* DIMENSIONS ARE APPROXIMATE AND FOR ILLUSTRATIVE PURPOSES ONLY