



453 Centre Road Berwick VIC

4 2 2

Proudly presenting this neat and cosy home, sitting in the great location in Berwick. Only a few minutes walking distance to Berwick Fields Primary school, local farmer's markets, parkland, bus stop; And Close to Berwick train station, Eden Rise Village Shopping centre, Federation University, Nossal High school, Chisholm Institute TAFE , Monash Health-Casey Hospital, Monash Freeway, princes Hwy and so on.

This brick veneer house with 4 bedrooms, 2 living rooms and 2 bathrooms set on a large block

Boasting:

- Master bedroom with Walk in robe, fully ensuite, and

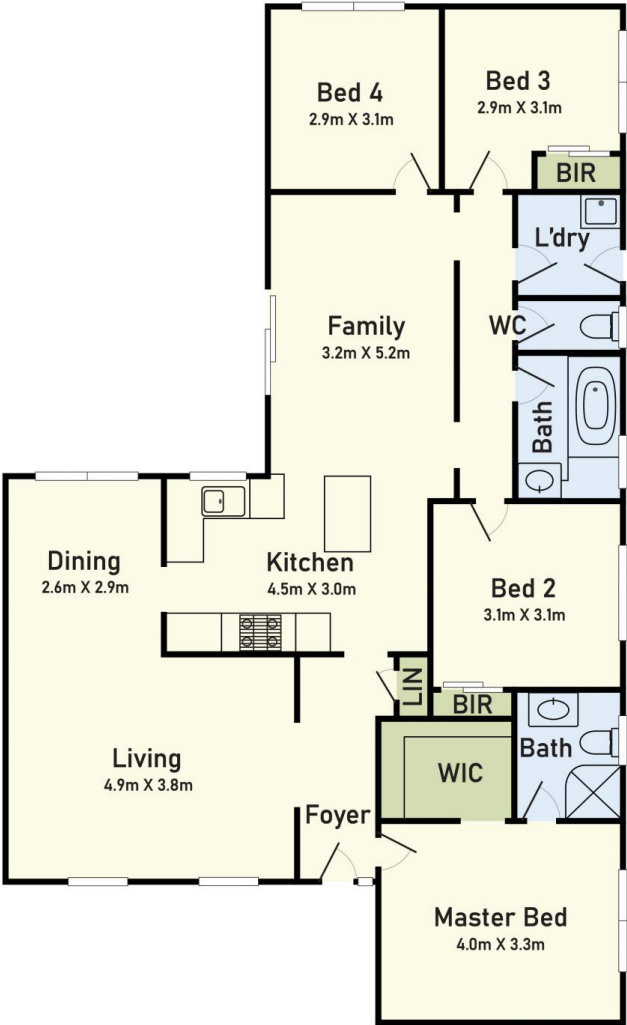
[For full version visit the website](https://www.yere.com.au/lease/vic/south-east/berwick/residential/house/7725339)

Type : House
Land Size : 660 sqm
View : <https://www.yere.com.au/lease/vic/south-east/berwick/residential/house/7725339>

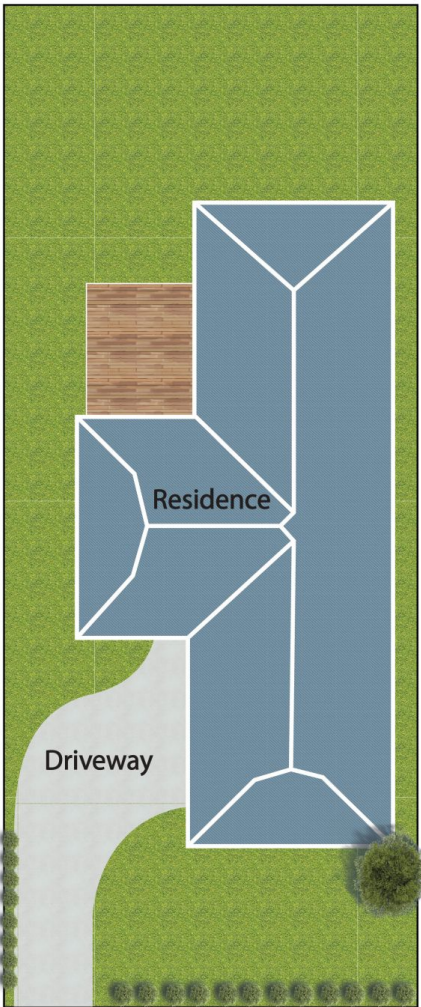


Caroline Phillips
03 8578 5700

Floor Plan



Site Plan



453 Centre Road, Berwick, VIC 3806

* Dimensions are approximate and for illustrative purposes only