



1/30 Wattle Grove Mulgrave VIC

3 1 2

Immediately appealing, this well-designed residence radiates warmth and positivity throughout. Beyond the privacy of an airy front garden the home welcomes you into a spacious and flexible living domain enjoying lush outdoor perspectives and natural light from all angles.

The main bedroom is expansive in size while the second & third bedrooms are also generous and serviced by the chic bathroom complete with shower, separate bath, vanity and toilet. There is also a separate laundry with storage space and a second toilet for added convenience.

A contemporary showstopper, the kitchen bristles with glossy cabinetry, top of the range stainless-steel appliances, including a gas cooktop, oven, rangehood and

Type : Unit
Price : \$ 750,000
Land Size : 321 sqm
View : <https://www.yere.com.au/sale/vic/east/mulgrave/residential/unit/7724023>

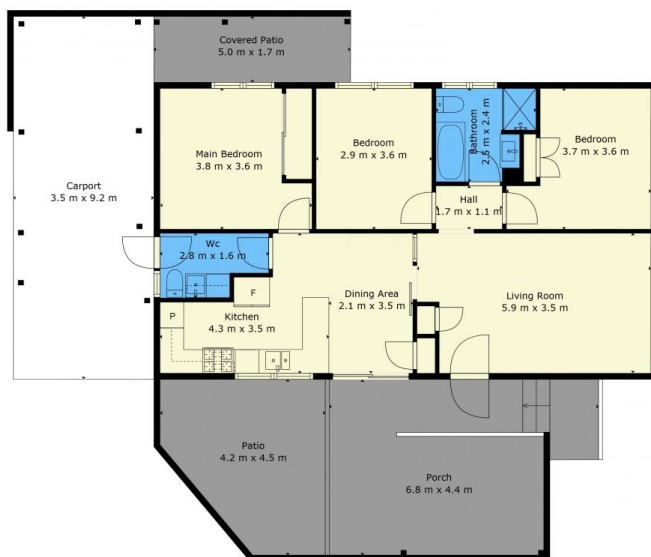


Samir Pabari
03 8578 5700



Lin Zhang
03 8578 5700

[For full version visit the website](https://www.yere.com.au)



GROSS INTERNAL AREA
FLOOR 1: 90 m²
EXCLUDED AREAS: COVERED PATIO: 8 m², PATIO: 15 m², PORCH: 27 m²,
CARPORT: 33 m²
TOTAL: 90 m²

Floor Plan



Site Plan

The floor plan is not to scale. Areas and dimensions are approximate and therefore plan should only be used for illustrative purposes