

## 453 Centre Road Berwick VIC

4 2 2

Proudly presenting this neat and cosy home, sitting in the great location in Berwick. Only a few minutes walking distance to Berwick Fields Primary school, local farmer's markets, parkland, bus stop; And Close to Berwick train station, Eden Rise Village Shopping centre, Federation University, Nossal High school, Chisholm Institute TAFE, Monash Health-Casey Hospital, Monash Freeway, princes Hwy and so on.

This brick veneer house with 4 bedrooms, 2 living rooms and 2 bathrooms set on a large block of 660 m2 (approx)

Boasting:

- Master bedroom with Walk in robe, fully ensuite, mirror

[For full version visit the website](https://www.yere.com.au/sale/vic/south-east/berwick/residential/house/7685164)

**Type** : House  
**Price** : \$ 806,000  
**Land Size** : 660 sqm  
**View** : <https://www.yere.com.au/sale/vic/south-east/berwick/residential/house/7685164>

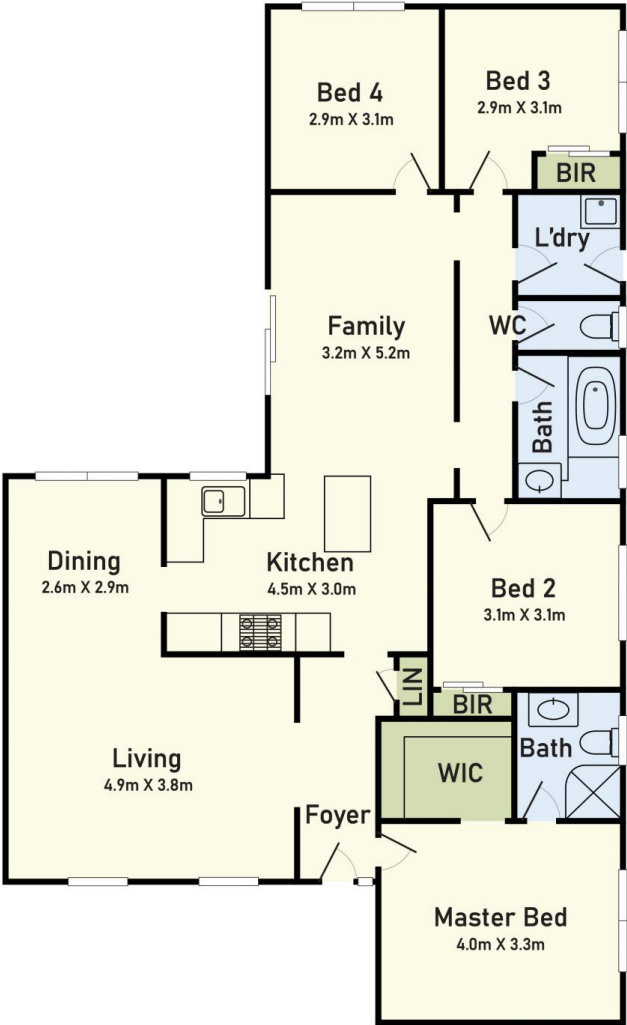


**Crystal Lin**  
03 8578 5700

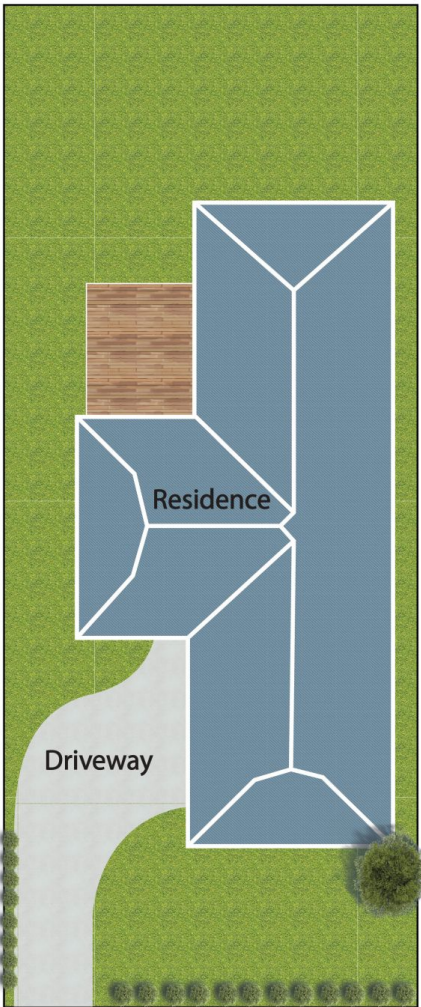


**Arif Akhlaqi**  
03 8578 5700

Floor Plan



Site Plan



453 Centre Road, Berwick, VIC 3806

\* Dimensions are approximate and for illustrative purposes only