

3 Golden Gate Drive Clyde North VIC

4 2 1

Located in the highly sought after Smiths Park Estate is this brand-new park facing property gives you the opportunity to take advantage of the proposed and existing amenities that adorn Clyde North and the surrounding areas. With easy access to the Monash Freeway, you are located only 40 minutes from Melbourne's CBD and 25 minutes to nearby Mornington Peninsula. Upgrade your lifestyle today.

With Berwick and Cranbourne minutes away, you'll have direct access to a wealth of retail options, medical facilities, public transport options, sporting facilities and leisure centres as well as schools that cater to early childhood, primary, secondary and tertiary students alike. Stay fashionable, stay healthy and stay active with life at Smiths Park.

Type : House
Price : \$ 670,000
View : <https://www.yere.com.au/sale/vic/south-east/clyde-north/residential/house/7557017>

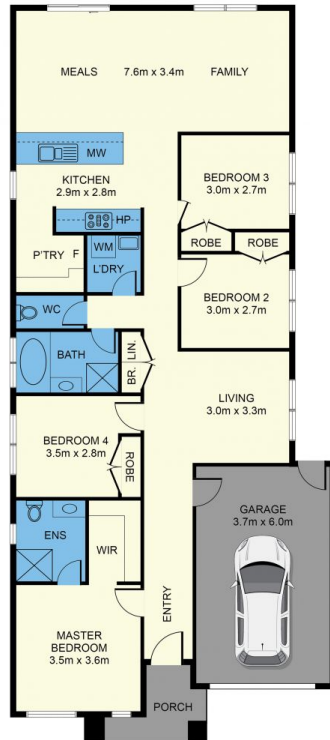


Rachhpal Singh
03 8578 5700



Megha Dhingra
03 8578 5700

[For full version visit the website](https://www.yere.com.au)



Floor Plan



Site Plan

The floor plan is not to scale. Areas and dimensions are approximate and therefore plan should only be used for illustrative purposes