

## 70 Langley Road Cranbourne South VIC

5 3 2

Discover this exceptional property nestled in Melbourne's rapidly growing Southeast Corridor, boasting an expansive 10.42 acres of pristine flat land. Perfectly positioned for easy access to major roads, freeways, premier schools, shopping precincts, train stations, beaches, parks, and golf courses, this location offers unparalleled convenience and lifestyle opportunities.

This prestigious residence features:

- 5 Bedrooms plus Study: Includes a master suite with full ensuite and walk-in robe.
- Spacious Kitchen: Equipped with high-quality appliances and ample storage.
- Multiple Living Areas: Offering versatility with a formal lounge, family room, rumpus room, and a separate large formal dining area.

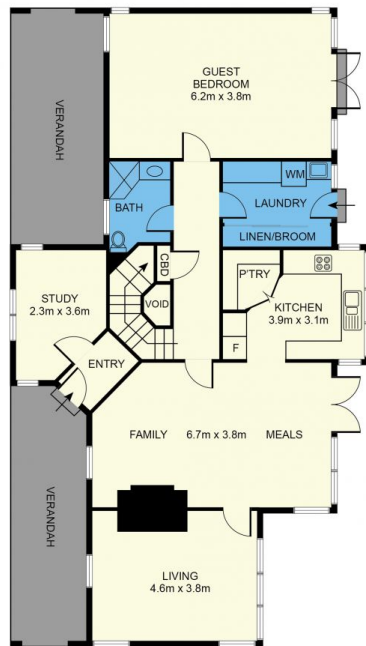
**Price** : Contact Agent  
**Land Size** : 41700 sqm  
**View** : <https://www.yere.com.au/sale/vic/south-east/cranbourne-south/residential/rural/7484083>



**Rachhpal Singh**  
03 8578 5700



**Bhethnee Kaur**  
03 8578 5700



GROUND FLOOR



FIRST FLOOR

The floor plan is not to scale. Areas and dimensions are approximate and therefore plan should only be used for illustrative purposes