



26 Deakin Crescent Dandenong North VIC

3 1 3

Located close to the Lyndale Greens Primary School, Wooranna Park Primary School, Lyndale Secondary College, Dandenong Plaza, Waverley Gardens Shopping Centre, Endeavour Hills Shopping Centre, Bus Route 802, 804, 850, Dandenong, Noble Park and Yarraman Train Station and all other amenities is this family home proudly boasting: -

3 spacious bedrooms, 1 bathroom with bathtub and a separate toilet
Spacious kitchen with quality appliances and plenty of storage space
1 large living area plus a separate dining area
Single carport with off street parking for additional vehicles

Type : House
Price : \$ 610,000
View : <https://www.yere.com.au/sale/vic/south-east/dandenong-north/residential/house/7437502>

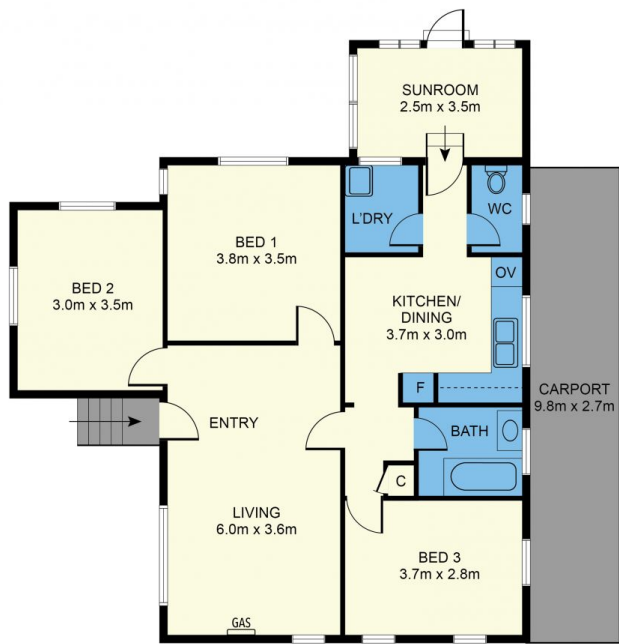


Rachhpal Singh
03 8578 5700



Megha Dhingra
03 8578 5700

[For full version visit the website](https://www.yere.com.au)



Floor Plan



Site Plan

The floor plan is not to scale. Areas and dimensions are approximate and therefore plan should only be used for illustrative purposes