



93 Adriatic Circuit Clyde VIC

3 2 2

Located close to St Peter's College, Wilandra Rise Primary School, Clyde Primary School, Selandra Rise Shopping Centre, Shopping on Clyde, Cranbourne and Berwick Train Station, Monash Freeway, local bus stops, parks, medical centres, childcare centres, kindergartens and all other amenities is this beautiful display home proudly boasting: -

3 bedrooms, master with full ensuite, WIR, upgraded timber windows, double vanities and bigger shower
Open plan kitchen with high end appliances, stone benchtop, dishwasher and plenty of storage space
2 living areas including the formal lounge and family plus the separate formal dining area
Double lock up garage with kitchnette, toilet, storage cupboards, internal and remote access

[For full version visit the website](https://www.yere.com.au)

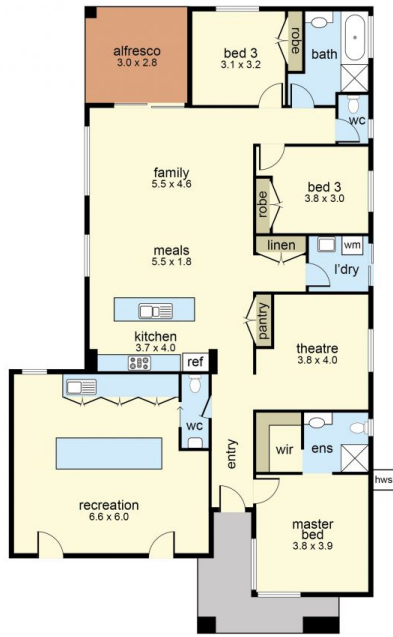
Type : House
Price : \$ 725,000
Land Size : 425 sqm
View : <https://www.yere.com.au/sale/vic/south-east/clyde/residential/house/7293564>



Rachhpal Singh
03 8578 5700



Megha Dhingra
03 8578 5700



Floor Plan



Site Plan

The floor plan is not to scale. Areas and dimensions are approximate and therefore plan should only be used for illustrative purposes