



8 Whitehaven Street Berwick VIC

3 2 2

This modern contemporary home boasts a sleek, front facade that is complimented by a low maintenance front yard. This property is truly a gem! As you walk up the beautifully exposed aggregate driveway, you are welcomed by a grand entry.

Upon entry, you will be greeted by a modern interior that is suitable for the most articulate person. You have access to a double garage which can happily fit two vehicles, a modern kitchen with enough space to accommodate guests alike, and a neatly presented courtyard/backyard area. There is nothing you need to do in this home-turn the key and enjoy easy living.

You will appreciate the following features:

[For full version visit the website](https://www.yere.com.au/sale/vic/south-east/berwick/residential/house/7272711)

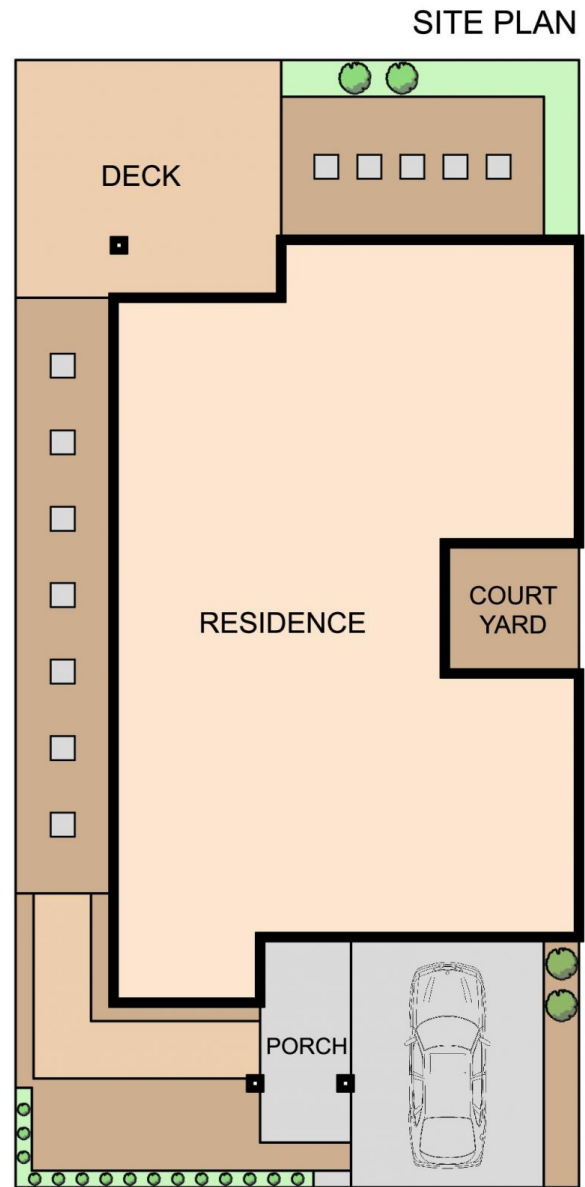
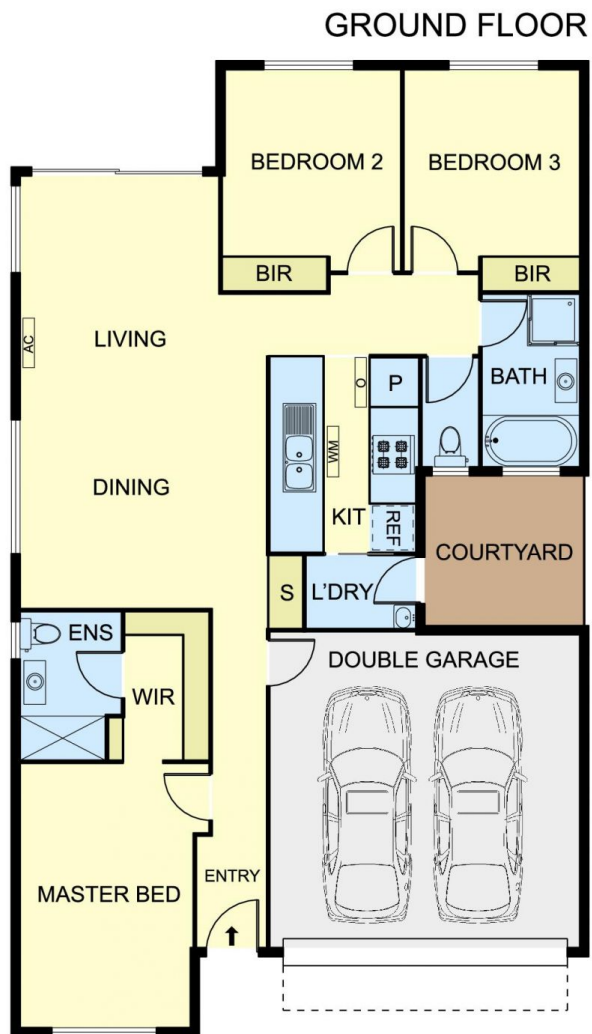
Type : House
Price : \$ 718,000
Land Size : 313 sqm
View : <https://www.yere.com.au/sale/vic/south-east/berwick/residential/house/7272711>



Lin Zhang
03 8578 5700



Rachhpal Singh
03 8578 5700



8 Whitehaven St, Berwick

*Dimensions are approximate and for illustrative purposes only