



49 Galveston Road Clyde VIC

4 2 2

Located close to St Peter's college, Wilandra Rise primary school, Clyde primary school, Selandra Rise shopping centre, Shopping on Clyde, Cranbourne and Berwick train station, Monash freeway, local bus stops, parks, medical centres, childcare centres, kindergartens and all other amenities is this beautiful luxurious family home proudly boasting: -

4 bedrooms, master with full ensuite, WIR, double vanities and bigger shower
Open plan kitchen with dishwasher, high end appliances, bulkhead ceiling with pendant lights and plenty of storage space
2 living areas including the formal lounge and family plus the separate formal dining area

Type : House

Price : \$ 763,000

View : <https://www.yere.com.au/sale/vic/south-east/clyde/residential/house/7222155>

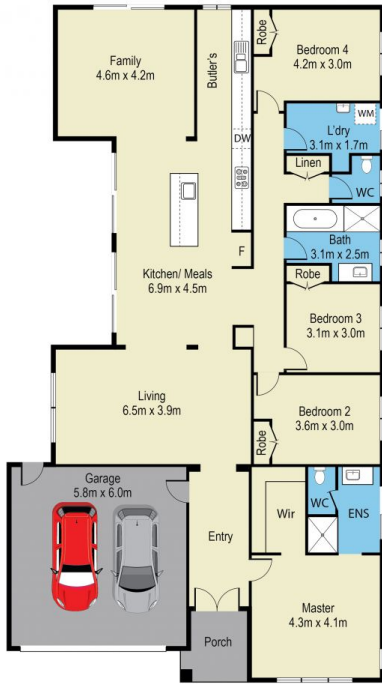


Rachhpal Singh
03 8578 5700



Megha Dhingra
03 8578 5700

[For full version visit the website](https://www.yere.com.au)



Floor Plan



Site Plan

The floor plan is not to scale. Areas and dimensions are approximate and therefore plan should only be used for illustrative purposes