

## 7 Sunridge Place Berwick VIC

4 2 3

Located in the highly sought-after Eden Rise Estate and close to the Eden Rise shopping centre, quality schools, Chisholm TAFE, Federation university, Monash freeway, Casey hospital, local parks, walkways, local bus stops, medical centres and all other amenities is this spacious double storey home proudly boasting: -

4 bedrooms, master with full ensuite and WIR's  
Spacious kitchen with quality appliances and plenty of storage space  
4 living areas including the formal lounge, family, rumpus and retreat plus the separate formal dining area  
Double lock up garage with internal and remote access

Extras include: - hydronic heating, split system air

[For full version visit the website](https://www.yere.com.au)

**Type** : House  
**Price** : \$ 1,210,000  
**Land Size** : 810 sqm  
**View** : <https://www.yere.com.au/sale/vic/south-east/berwick/residential/house/7154336>

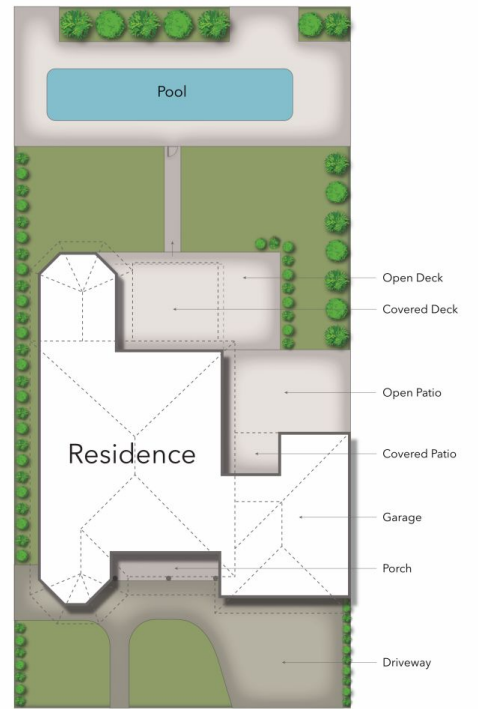


**Rachhpal Singh**  
03 8578 5700



**Val Edwards**  
0403 222 885

H-O-R-I-Z-O-N-A-L



7 Sunridge Place BERWICK

4 Bed 2 Bath 3 Car



While every attempt has been made to ensure the accuracy of the floor plan contained here, measurements of doors, windows, rooms and any other items are approximate and no responsibility is taken for any error omission or miss measurement. This plan is for illustrative purposes only and should be used as such by any prospective purchaser.