



93 Moondarra Drive Berwick VIC

3 2 2

Perfectly nestled in a treelined street close to private schools, shops & located transport in prestigious suburb of Berwick, this modern home features open plan lounge complete with air conditioner & sliding door access to the low maintenance yard, modern kitchen with stainless steel appliances, study downstairs plus powder room & separate laundry, three bedrooms upstairs (master with walk in robe & ensuite), two remaining rooms both with built in robes plus family bathroom.

Additional features include gas ducted heating, split system air conditioner, double lock up garage with internal and remote access & low maintenance yards.

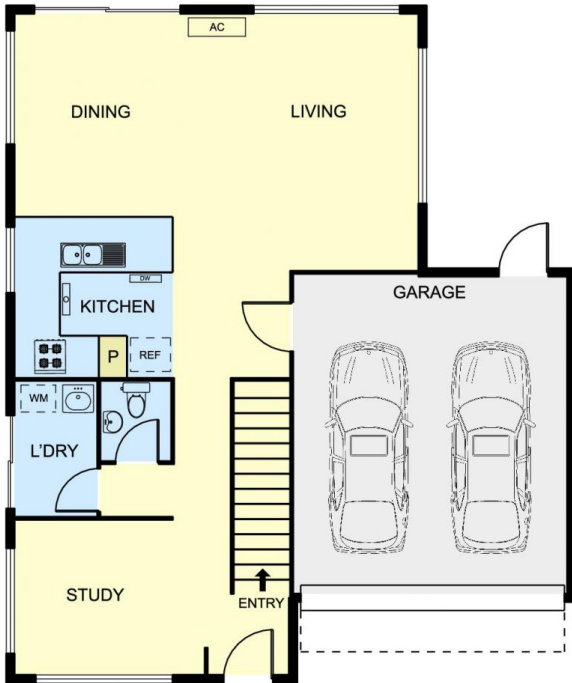
Type : House
Land Size : 271 sqm
View : <https://www.yere.com.au/sale/vic/south-east/berwick/residential/house/7046192>



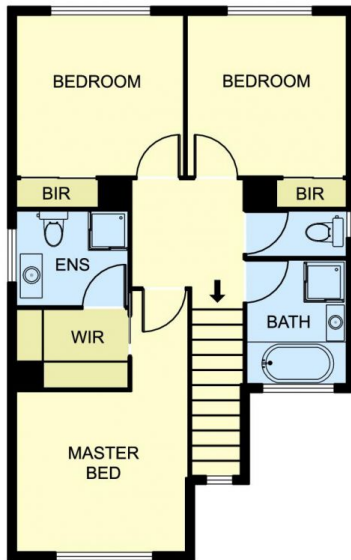
Lin Zhang
03 8578 5700



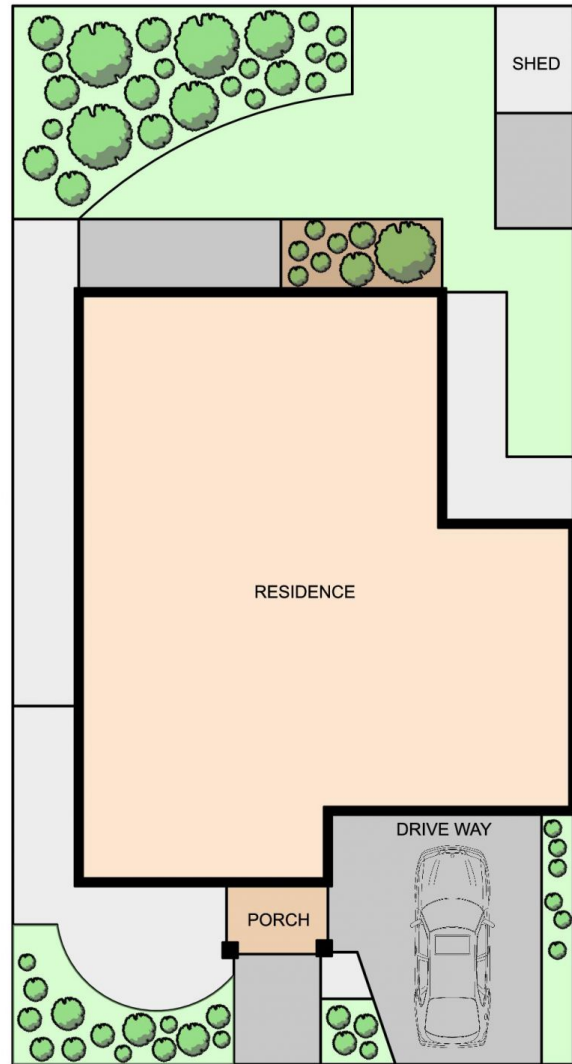
Seb Jean-Pierre
03 8578 5700



GROUND FLOOR



FIRST FLOOR



SITE PLAN

93 Moondarra Drive, Berwick

*Dimensions are approximate and for illustrative purposes only