



31 Lawrence Drive Berwick VIC

4 🛏 2 🚿 2 🚗

Situated on the highly desirable northside of Berwick close to schools, shops and parks you will find this family home.

Downstairs you will find a sitting room, 4th bedroom/study, large laundry with ample cupboard space, kitchen/meals complete with wide benchtops and 5 burner stove and a lounge opening out to the split level backyard with gated access to pull your trailers, etc through.

Upstairs aside from the stunning views you will find, the main bathroom with an extra deep bath, 3 bedrooms, master complete with ensuite.

Other features you are sure to love include ducted heating, solar panels, timber floorboards and a double garage.

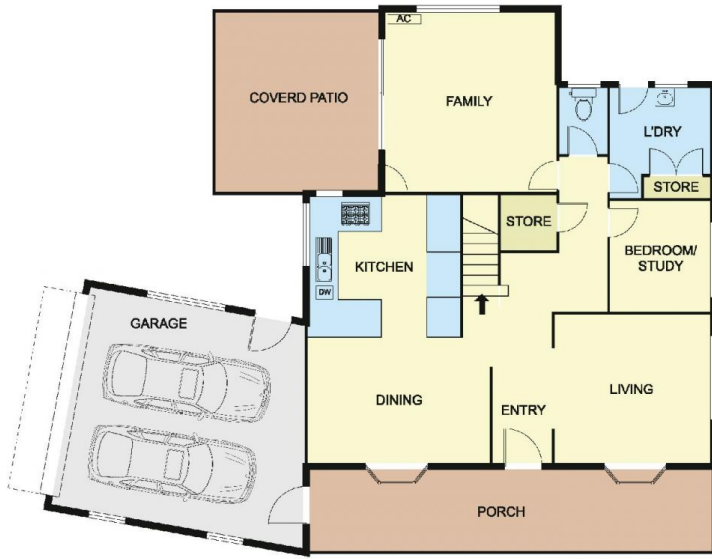
Type : House
Price : \$ 930,000
Land Size : 692 sqm
View : <https://www.yere.com.au/sale/vic/south-east/berwick/residential/house/6953245>



Lin Zhang
03 8578 5700



Seb Jean-Pierre
03 8578 5700



GROUND FLOOR



FIRST FLOOR



SITE PLAN

31 Lawrence Drive, Berwick

* Dimensions are approximate and for illustrative purposes only

