






37 Sabel Drive Cranbourne North VIC

3  2  2 

Located in the highly prestigious The Eve Estate and close to Alkira Secondary College, Tulliallan primary school, Hillsmeade primary school, Chisholm TAFE, Federation university, Monash freeway, Berwick and Narre Warren train station, The Eve shopping centre, The Avenue shopping centre, Eden Rise shopping centre, Casey Central shopping centre, Fountain Gate shopping centre, bus route 847, 899, local parks, lakes, walkways, bicycle tracks, child care centres, kindergartens, medical centres, Casey hospital, St John of God hospital and all other amenities is this beautiful home proudly boasting:-

3 bedrooms, master with full ensuite and WIR
Spacious kitchen with quality appliances, stone benchtops, dishwasher and plenty of storage space

Type : House

Price : \$ 685,000

View : <https://www.yere.com.au/sale/vic/south-east/cranbourne-north/residential/house/6839967>

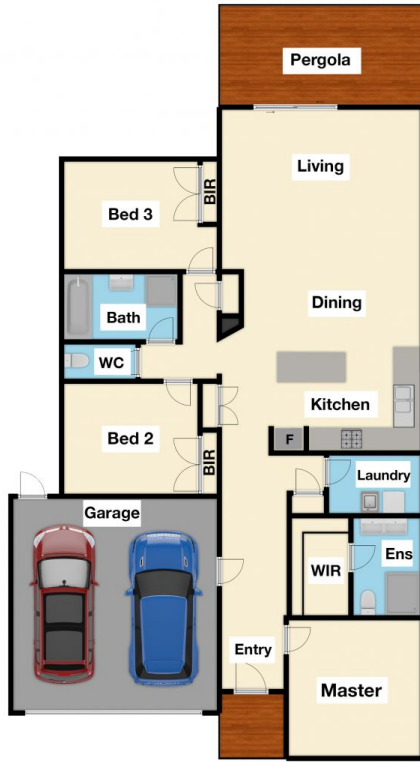


Rachhpal Singh
03 8578 5700



Lin Zhang
03 8578 5700

[For full version visit the website](https://www.yere.com.au)



Floor Plan



Site Plan

The floor plan is not to scale. Areas and dimensions are approximate and therefore plan should only be used for illustrative purposes