



## 16 Ellesse Way Berwick VIC

4 2 2

You will be impressed by this large family home with federation styling. The house sits on a generous 796sqm of land and is filled with architectural details including decorative arches, ceiling roses and bay windows. You will be greeted by a formal lounge with fireplace.

There are 4 good sized bedrooms and a study. Master bedroom has his and her wardrobe and full ensuite with spa bath. Open plan kitchen with separate dining area and a rumpus room making entertaining a breeze. The covered patio area overlooking the well maintained backyard.

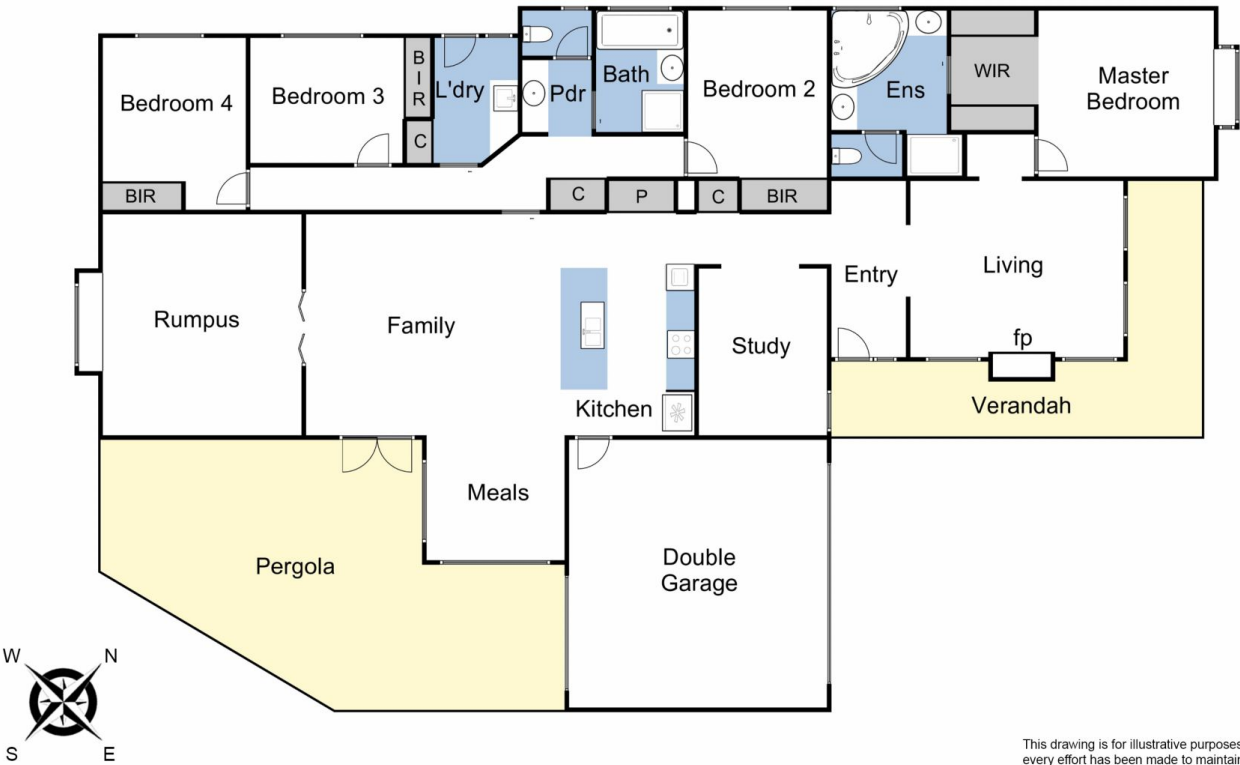
Completed with ducted heating, split system air conditioning, high ceilings, water tank, garden shed plus a double garage with internal access and rear roller door for

**Type** : House  
**Price** : \$ 948,888  
**Land Size** : 796 sqm  
**View** : <https://www.yere.com.au/sale/vic/south-east/berwick/residential/house/6777841>



**Lin Zhang**  
03 8578 5700

[For full version visit the website](https://www.yere.com.au)



This drawing is for illustrative purposes only and while every effort has been made to maintain accuracy, prospective purchasers should check all information