



19 Norwich Drive Berwick VIC

4 2 2

This luxury design 4 bedroom house is situated in the Chase Estate.

Upon entry you will be greeted with high ceilings and a sun-filled courtyard.

Four bedroom, master with ensuite.

Gourmet kitchen with stone benchtop and island waterfall making entertaining a breeze. Connected with the kitchen is a northwest facing sunroom providing extra living/entertaining space.

Complete with heating/cooling and low maintenance backyard sitting on a 512sqm block of land.

All with walking distance to great schools Berwick Chase

[For full version visit the website](https://www.yere.com.au/sale/vic/south-east/berwick/residential/house/6768619)

Type : House

Price : \$ 850,000

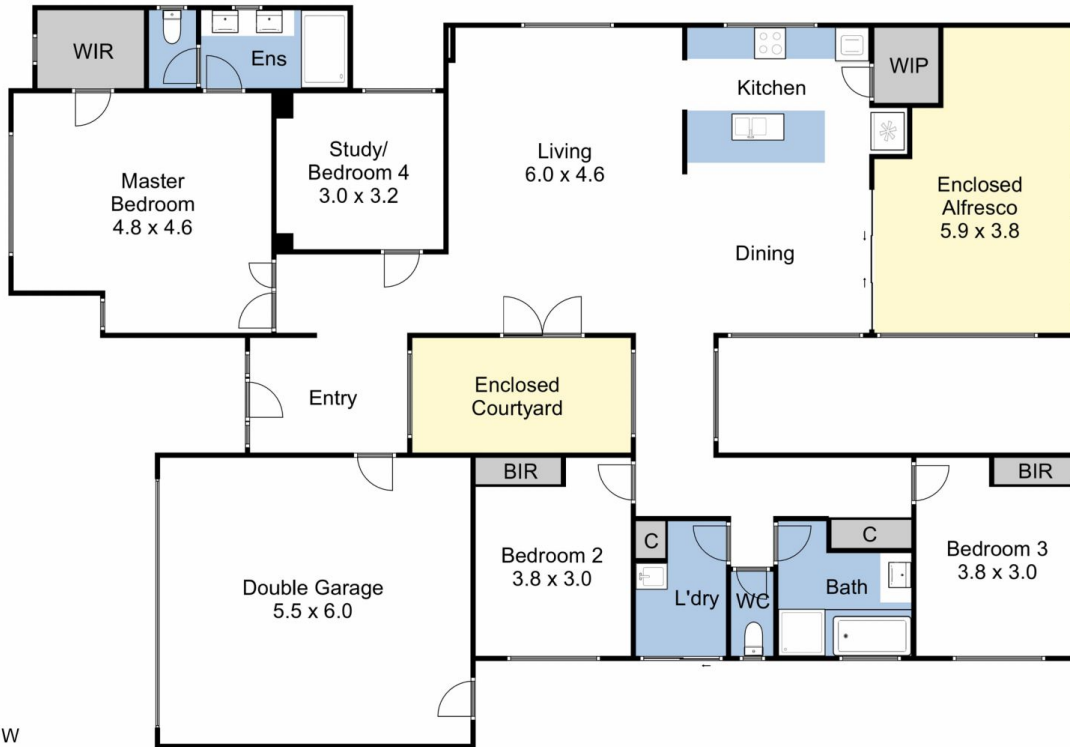
View : <https://www.yere.com.au/sale/vic/south-east/berwick/residential/house/6768619>



Lin Zhang
03 8578 5700



Rachhpal Singh
03 8578 5700



This drawing is for illustrative purposes only and while every effort has been made to maintain accuracy, prospective purchasers should check all information