



5/13 Wall Street Noble Park VIC

2 1 1

Situated in a great location and within walking distance to Noble Park train station, bus stops, Noble Park Primary School and eateries on Douglas Street. This stylish and very young townhouse offers 2 spacious bedrooms with BIRs, living area at entrance, central bathroom and WC on the ground floor. On the upper level you are welcomed into a large living/family area, massive kitchen with stainless steel appliances, dishwasher and ample of storage over-looking the meals area. There is an extra powder room upstairs for added convenience. Enjoy the balcony during the summer or for a morning coffee to kick-start your day.

Other features include split system air conditioners in all bedrooms and living areas, rainwater tank, remote garage

Type : Townhouse

Price : \$ 550,000

View : <https://www.yere.com.au/sale/vic/south-east/noble-park/residential/townhouse/6685886>



Samir Pabari
03 8578 5700

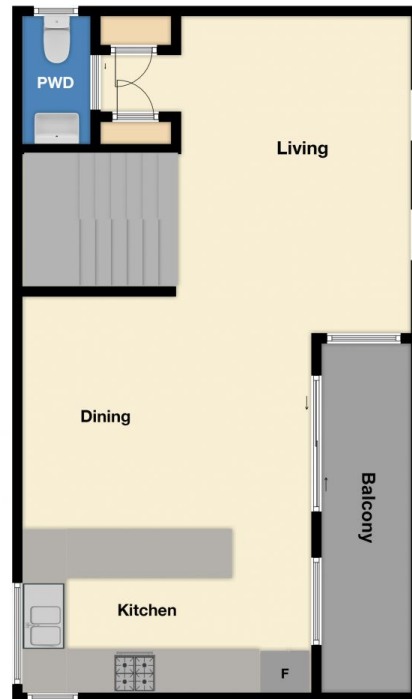


Rachhpal Singh
03 8578 5700

[For full version visit the website](https://www.yere.com.au)



Ground Floor



First Floor

The floor plan is not to scale. Areas and dimensions are approximate and therefore plan should only be used for illustrative purposes