



33 Simmental Drive Clyde North VIC

5 3 2

Located close to St Peter's College, Wilandra Rise Primary School, Clyde Primary School, Selandra Rise Shopping Centre, Shopping on Clyde, Cranbourne and Berwick Train Station, Monash Freeway, local bus stops, parks, medical centres, childcare centres, kindergartens and all other amenities is this beautiful double storey home proudly boasting: -

5 bedrooms, 2 master bedrooms (1 on each floor), 3 bathrooms and 4 toilets
Spacious kitchen with quality appliances, dishwasher and walk-in pantry
3 living areas including the formal lounge, family, rumpus plus the separate dining area
Double lock-up garage with internal and remote access

[For full version visit the website](https://www.yere.com.au)

Type : House
Price : \$ 1,087,000
Land Size : 515 sqm
View : <https://www.yere.com.au/sale/vic/south-east/clyde-north/residential/house/6655816>

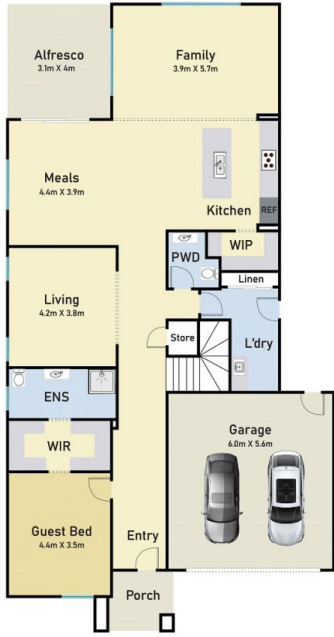


Lin Zhang
03 8578 5700



Megha Dhingra
03 8578 5700

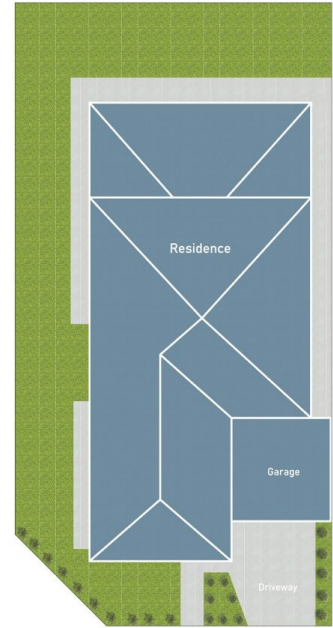
Ground Floor



First Floor



Site Plan



33 Simmental Drive, Clyde North

* Dimensions are approximate and for illustrative purposes only