



39 Hedgeley Drive Berwick VIC

3 2 4

Located close to the Nossal High School (7 mins drive), Brentwood Park Primary School (3 mins drive), Berwick Chase Primary School (4 mins drive), Berwick Fields Primary School (4 mins drive), Eden Rise Shopping Centre just across the road, Fountain Gate Shopping Centre (10 mins drive), Berwick Train Station (9 mins drive), Monash Freeway Access (5 mins drive), walking distance to the bus route 834, 835, 846, 888, 889, 899, 981, local parks, lakes, bicycle tracks, medical centres, public and private hospitals, childcare centres, kindergartens and all other amenities is this beautiful home proudly boasting:-

3 bedrooms, master with full ensuite, spa bath and WIR
Renovated spacious kitchen with stone benchtops, quality appliances, dishwasher and plenty of storage space

[For full version visit the website](https://www.yere.com.au)

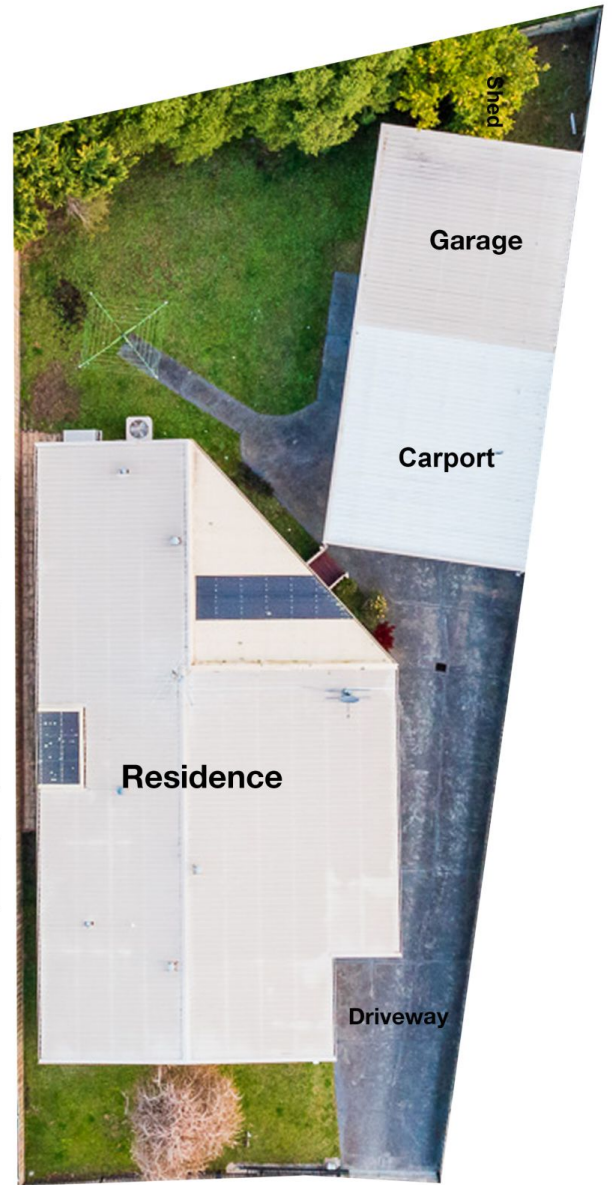
Type : House
Price : \$ 810,000
Land Size : 702 sqm
View : <https://www.yere.com.au/sale/vic/south-east/berwick/residential/house/6535536>



Rachhpal Singh
03 8578 5700



Floor Plan



Site Plan

