



5 Sarah-Louise Place Berwick VIC

4 2 2

Occupying a prime position so close to picturesque parkland, this freshly updated home is spacious, move-in ready and filled with natural light. Enjoying close proximity to fantastic family amenities and prestigious schools, this is a rare find on a massive block of 673m² (approx.) perfectly positioned in a quiet cul-de-sac.

Comprising of four great sized bedrooms, featuring master bedroom which has its own exclusive ensuite with double vanities, shower, and a functional walk-in robe. The remaining three bedrooms all have mirrored built-in robes. Second bathroom is centrally located along with a separate powder room and spacious laundry with convenient outside access. Central heating and cooling throughout the house for your comfort.

Type : House
Land Size : 673 sqm
View : <https://www.yere.com.au/sale/vic/south-east/berwick/residential/house/6488912>

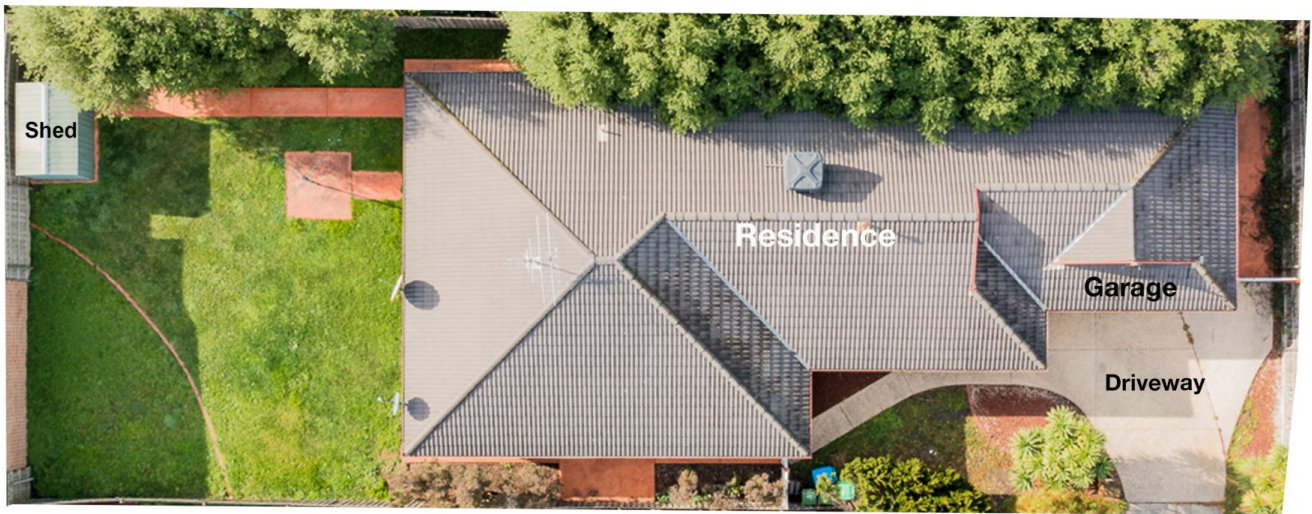


Samir Pabari
03 8578 5700



Rachhpal Singh
03 8578 5700

[For full version visit the website](https://www.yere.com.au)



Site Plan



Floor Plan

