

## 18 Elaine Court Cranbourne VIC

3  1  6 

Located close to the St Agatha's Primary School (2 mins drive), Cranbourne Park Primary School (3 mins drive), St Peter's College (4 mins drive), Cranbourne Primary School (4 mins drive), Cranbourne West Secondary College (5 mins drive), Cranbourne Secondary College (6 mins drive), Barton Primary School (6 mins drive), Cranbourne Park Shopping Centre (5 mins drive), Hunt Club Village Shopping Centre (8 mins drive), Cranbourne Train Station (5 mins drive), Bus Route 760, 791 and all other amenities is this renovated home proudly boasting:-

3 spacious bedrooms, 1 bathroom and separate toilet  
Spacious kitchen with quality appliances and plenty of storage space  
Two living areas including the formal lounge and family

[For full version visit the website](https://www.yere.com.au)

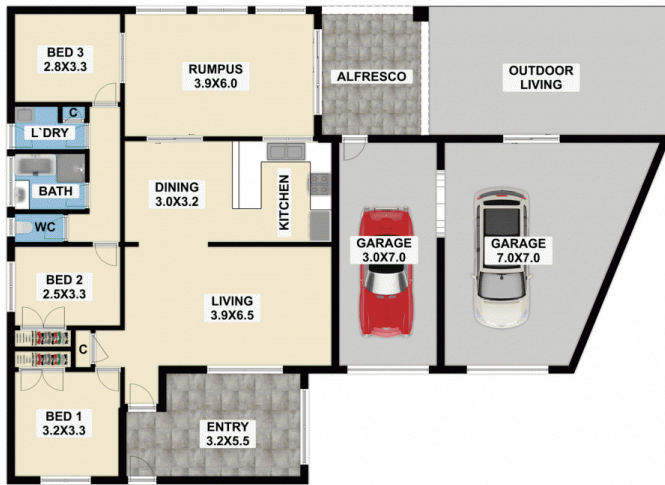
**Type** : House  
**Price** : \$ 620,000  
**Land Size** : 665 sqm  
**View** : <https://www.yere.com.au/sale/vic/south-east/cranbourne/residential/house/6400740>



**Megha Dhingra**  
03 8578 5700



**Rachhpal Singh**  
03 8578 5700



FLOOR PLAN

SITE PLAN

**18 ELAINE COURT, CRANBOURNE**

TOP COLOR PHOTOGRAPHY  
PH : 0413455008

The floor plan is not to scale. Areas and dimensions are approximate and therefore plan should only be used for illustrative purposes.