

12 Dapple Crescent Clyde North VIC

4  2  2 

VENDOR IS FLEXIBLE ON SHORT OR LONG TERM SETTLEMENT

If you always dream of a splendid home in a highly sought-after location, then look no further, this display level home will tick all the boxes for you. Within walking distance to the beautiful lake and close to quality schools, public transport, freeway access, shopping centres, Chisholm TAFE, Federation university, Casey Hospital, St John of God Hospital, medical centres, childcare centres and all other amenities, convenience and comfort can never be any better living at this prime location. This gorgeous home is proudly boasting: -

4 bedrooms, master with full ensuite and WIR

[For full version visit the website](#)

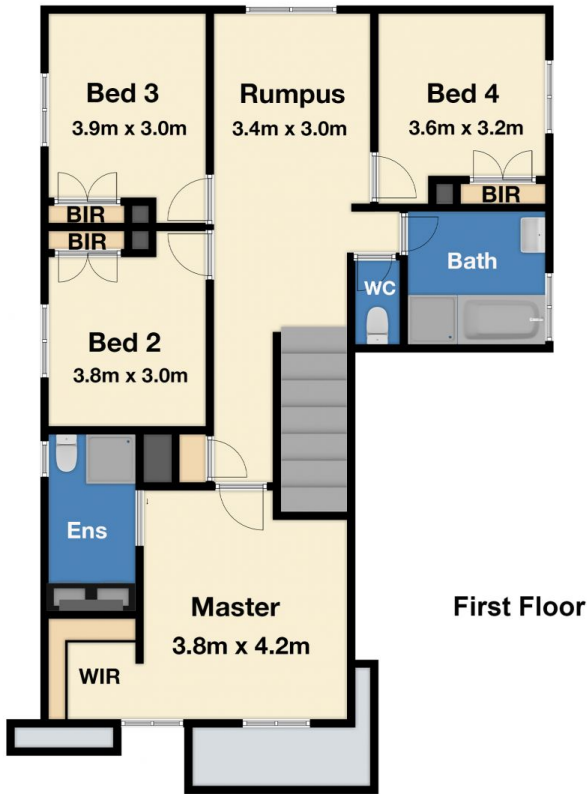
Type : House
Price : \$ 815,000
View : <https://www.yere.com.au/sale/vic/south-east/clyde-north/residential/house/6400736>



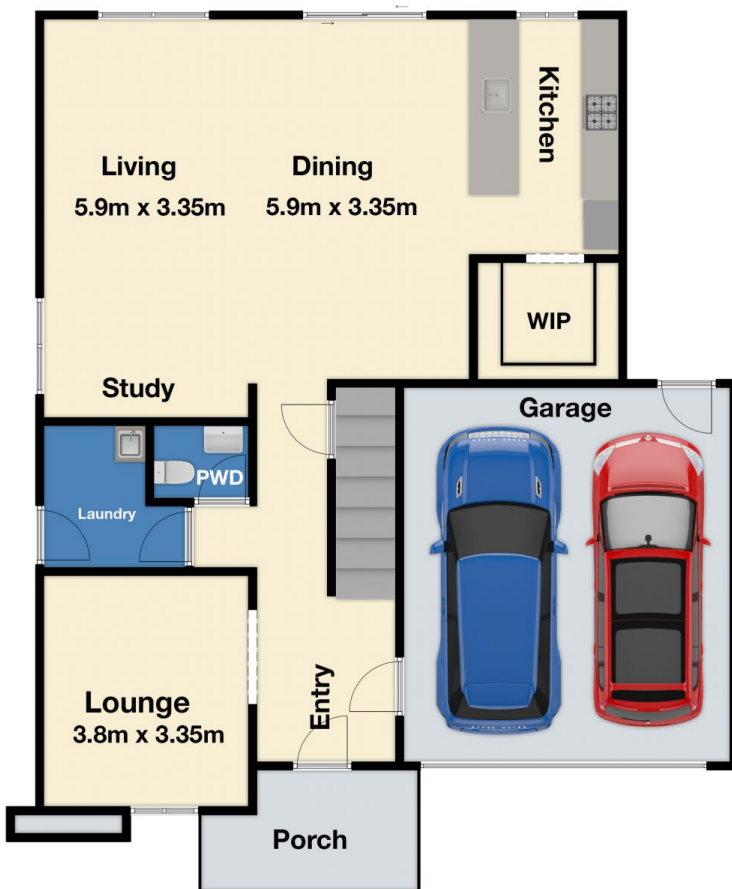
Rachhpal Singh
03 8578 5700



Manoj Hettiarachchi
0451 039 230



Site Plan



Ground Floor

