



## 9 Satin Street Cranbourne VIC

5 2 2

How often you come across an ex display home packed full of upgrades on over 600m2 land with amazing outdoor area, built to perfection both inside and outside, walking distance to the shopping centres, parks, schools, local bus stops and within 5-10 minutes' drive to all the amenities including the train station, restaurants, medical centres, child care centres, major retail stores etc, if you are not going to settle less than the best of the best for yourself then look no further, this house will blow your mind away once you will inspect this marvellous property and find out what it has got to offer, the house is proudly boasting:-

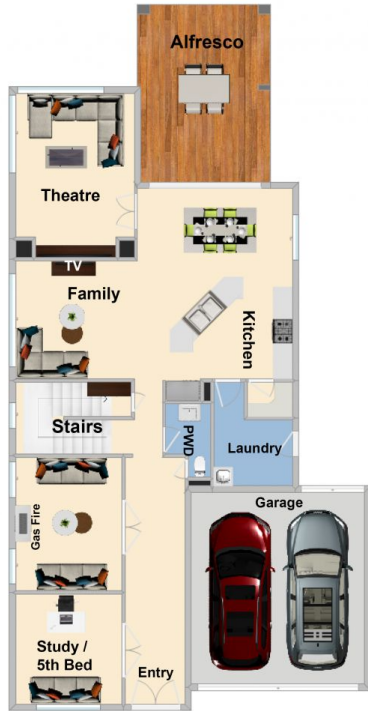
4 genuine size bedrooms plus study/5th bedroom, master with full ensuite, WIR's, spa bath and its own private balcony

[For full version visit the website](https://www.yere.com.au)

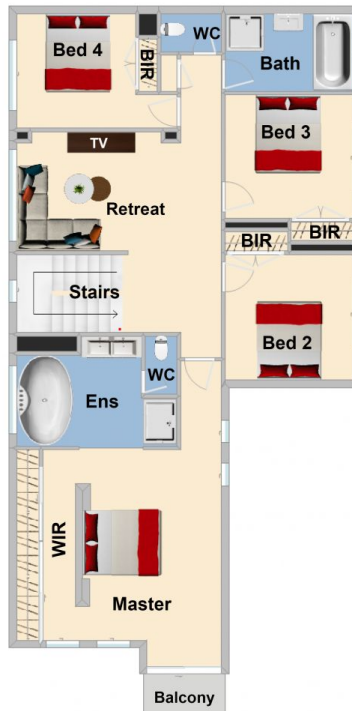
**Type** : House  
**Price** : \$ 812,000  
**Land Size** : 613 sqm  
**View** : <https://www.yere.com.au/sale/vic/south-east/cranbourne/residential/house/5717960>



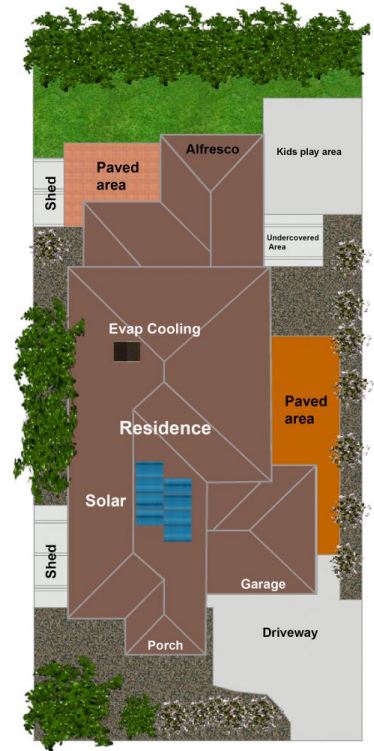
**Rachhpal Singh**  
03 8578 5700



Ground Floor



Upper Floor



Site Plan

The floor plan is not to scale. Areas and dimensions are approximate and therefore plan should only be used for illustrative purposes