

26 Lakeside Drive Berwick VIC

5 5 2

Facing the lake and located close to the quality schools, Chisholm TAFE, Federation university, Eden Rise shopping centre, Berwick train station, local bus stops, Monash freeway, Casey hospital, St John of God hospital, medical clinics, dental clinics, child care centres, kindergartens, local parks and all other amenities is this finished to perfection Porter Davis home comes with comfort, space and luxury and proudly boasting:-

5 bedrooms with 5 ensuites plus study with rare to find one bedroom with ensuite downstairs
All 5 bedrooms comes with WIR's with master bedroom upstairs comes with its own private enclosed balcony with beautiful views
Spacious kitchen with quality appliances, plenty of storage

Type : House

Price : \$ 915,500

View : <https://www.yere.com.au/sale/vic/south-east/berwick/residential/house/5717904>

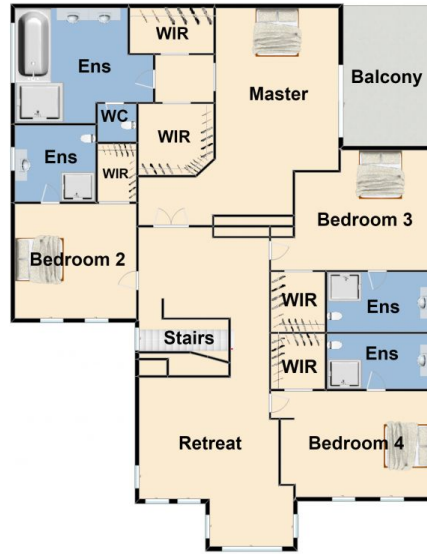


Rachhpal Singh
03 8578 5700

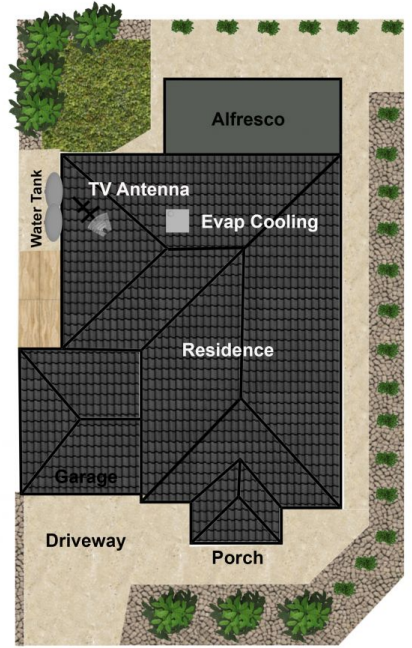
[For full version visit the website](https://www.yere.com.au)



Ground Floor



Upper Floor



Site Plan

The floor plan is not to scale. Areas and dimensions are approximate and therefore plan should only be used for illustrative purposes