



16 Guilfoylia Drive Cranbourne North VIC

4 2 2

Located within a few minutes' drive to all the amenities including the Eden rise shopping centre, Tullillan primary school, Alkira secondary college, other quality schools, Chisholm TAFE, Federation university, Monash freeway access, public and private hospitals, child care centres, Berwick train station, local bus stops, parks, walkways, cycling tracks, lake and all other amenities is this beautiful house proudly boasting: -

4 bedrooms, master with full ensuite and WIR
Spacious kitchen with lots of storage space and walk in pantry
Open plan living and dining area to entertain families and friends throughout the year
Double lock up garage with internal and remote access

Type : House
Price : \$ 557,500
View : <https://www.yere.com.au/sale/vic/south-east/cranbourne-north/residential/house/5717883>

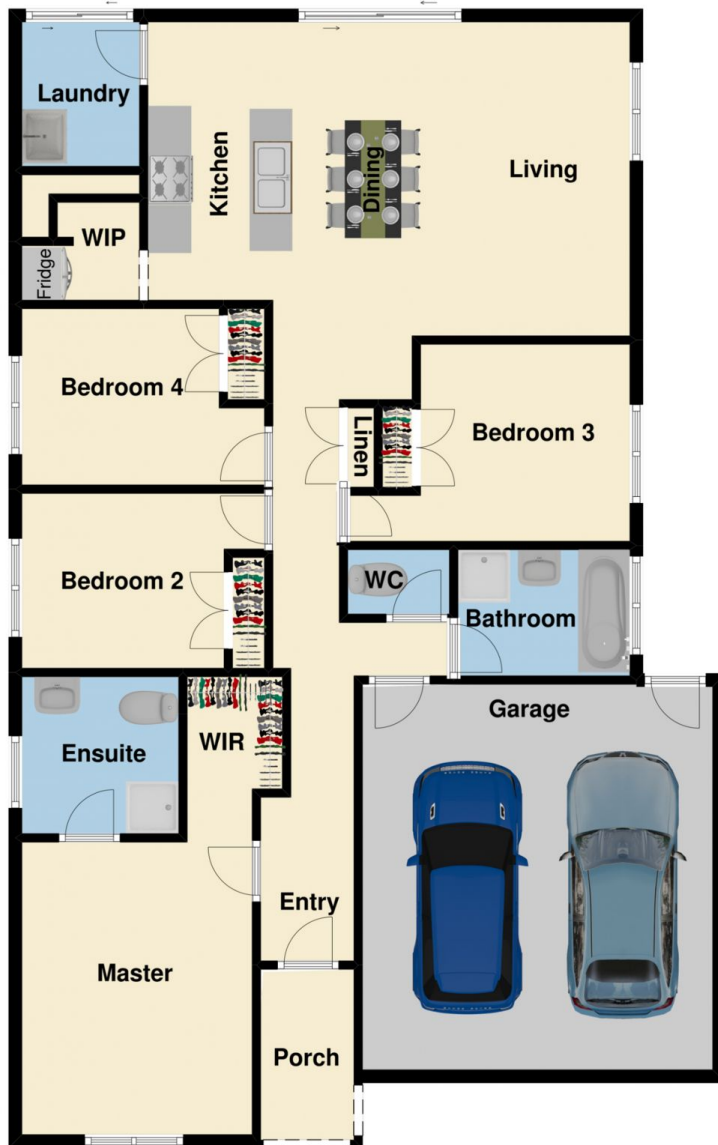


Rachhpal Singh
03 8578 5700

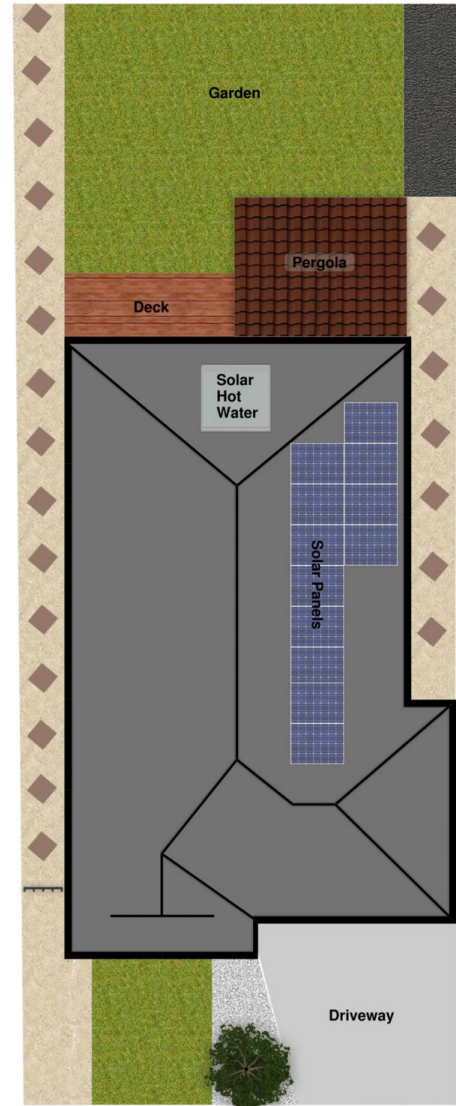


Sean Singh
0468 491 676

[For full version visit the website](https://www.yere.com.au)



Floor Plan



Site Plan

